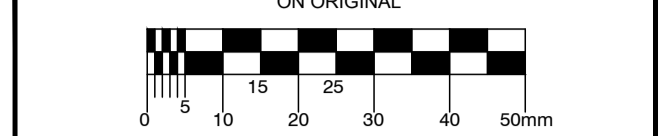


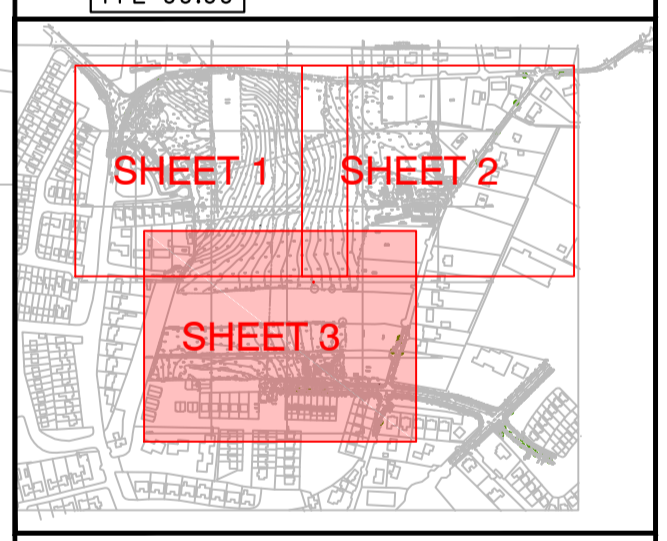
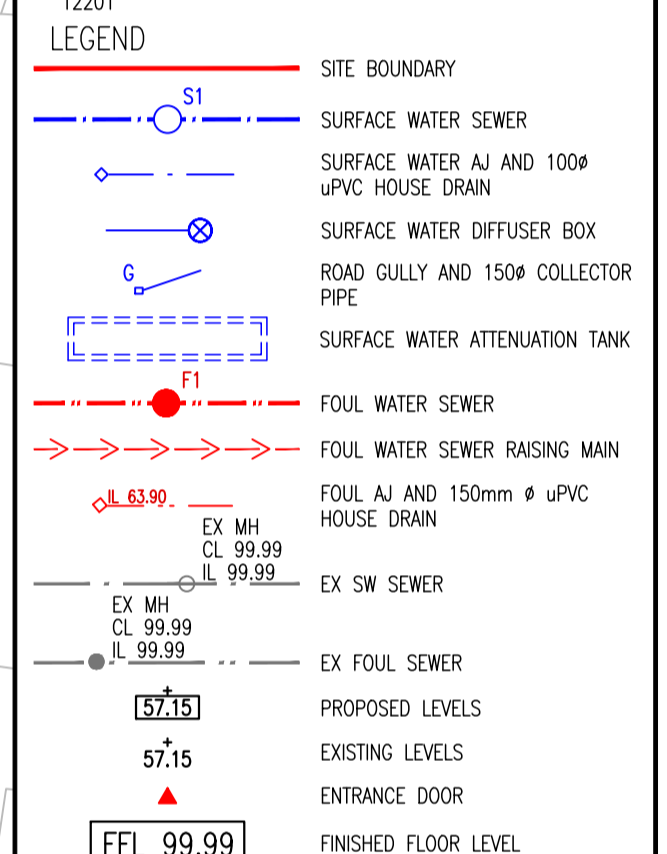
- LIST OF IRISH WATER WASTEWATER STANDARD DETAILS BROUGHT INTO THE CONTRACT
- STD-WW-02 TYPICAL LAYOUT FOR SEWER WITHIN NEW DEVELOPMENT
  - STD-WW-03 DRAIN AND SERVICE CONNECTION PIPEWORK
  - STD-WW-04 TYPICAL SEWER/SERVICE PIPE CONNECTION
  - STD-WW-05 TYPICAL SERVICE LAYOUT INDICATING SEPARATION DISTANCES
  - STD-WW-06 RESTRICTIONS ON TREES/SHRUBS PLANTING ADJACENT TO SEWERS
  - STD-WW-07 TRENCH BACKFILL & BEDDING
  - STD-WW-08 CONCRETE BED, HAUNCH & SURROUND TO WASTEWATER PIPES
  - STD-WW-09 BLOCKWORK MANHOLE (<450mmø)
  - STD-WW-10 PRE-CAST CONCRETE MANHOLE
  - STD-WW-11 IN-SITU CONCRETE MANHOLE
  - STD-WW-12 BACKDROP MANHOLES
  - STD-WW-13 PRIVATE SIDE INSPECTION CHAMBER
  - STD-WW-14 TRUSS BLOCKS FOR RISING MAINS
  - STD-WW-15 SCOUR VALVE CHAMBER (FOUL RISING MAIN <200mmø)
  - STD-WW-16 SLUICE VALVE DETAILS FOR RISING MAINS DUCTILE IRON (D.I.) PIPE (<200mmø)(SHEET 1 OF 2)
  - STD-WW-17 SLUICE VALVE DETAILS FOR RISING MAIN POLYETHYLENE (P.E.) PIPE (<200mmø)(SHEET 2 OF 2)
  - STD-WW-18 AIR VALVE CHAMBER (FOUL RISING MAIN <200mmø)
  - STD-WW-19 DUCT CHAMBER
  - STD-WW-20 EMERGENCY OVERTFLOW STRUCTURE
  - STD-WW-21 TYPICAL DITCH/STREAM CROSSING FOR GRAVITY MAIN (SHEET 1 OF 2)
  - STD-WW-22 TYPICAL DITCH/STREAM CROSSING FOR RISING MAIN (SHEET 2 OF 2)
  - STD-WW-23 TYPICAL BRIDGE CROSSING FOR RISING MAIN (SHEET 1 OF 2)
  - STD-WW-24 TYPICAL BRIDGE CROSSING FOR RISING MAIN (SHEET 2 OF 2)
  - STD-WW-25 SECURITY GATE & FENCING
  - STD-WW-26 INDICATIVE PUMPING STATION LAYOUT
  - STD-WW-27 FLOW METER CHAMBER (FOUL RISING MAIN <200mmø)
  - STD-WW-28 INDICATIVE SUBMERSIBLE PUMPING STATION
  - STD-WW-28A INDICATIVE PRE-CAST CONCRETE SUBMERSIBLE PUMPING STATION
  - STD-WW-29 RISING MAIN DISCHARGE MANHOLE
  - STD-WW-30 KIOSK TYPE 1 PUMPING STATION & WET KIOSK (SHEET 1 OF 2)
  - STD-WW-31 KIOSK TYPE 2 + 3 PUMPING STATION & WET KIOSK (SHEET 2 OF 2)
  - STD-WW-32 HARDSTANDING AREA PUMPING STATION (PERMEABLE & IMPERMEABLE)
  - STD-WW-33 LAMP BOLLARD & LAMP STANDARD
  - STD-WW-34 VENT STACK

© COPYRIGHT OF THIS DRAWING IS RESERVED BY DBFL CONSULTING ENGINEERS. NO PART SHALL BE REPRODUCED OR TRANSMITTED WITHOUT THEIR WRITTEN PERMISSION.



- ON ORIGINAL
- GENERAL NOTES:
1. ALL WORKS SHALL BE CONSTRUCTED IN ACCORDANCE WITH THE WORKS REQUIREMENTS.
  2. ALL DIMENSIONS IN METRES UNLESS SPECIFIED OTHERWISE.
  3. ALL CO-ORDINATES ARE TO IRISH TRANSVERSE MERCATOR.
  4. ALL LEVELS ARE TO ORDNANCE DATUM (MAIN HEAD).
  5. ALL TYPICAL TRAFFIC & OPERATIONS MANAGEMENT SHALL COMPLY FULLY WITH THE WORKS REQUIREMENTS.
  6. THE CONTRACTOR MUST UNSE DIRECTLY WITH LOCAL AUTHORITY DEPARTMENTS AS DIRECTED IN THE WORKS REQUIREMENTS.
  7. ALL VEHICULAR & PEDESTRIAN CYCLE & PRIVATE ACCESS ROADS WITHIN AND SURROUNDING THE WORKS EXTENTS MUST BE MAINTAINED THROUGHOUT THE WORKS IN ACCORDANCE WITH THE CONTRACTORS APPROVED TEMPORARY TRAFFIC & OPERATIONS MANAGEMENT PLAN.

- DRAWING SPECIFIC NOTES:
1. ALL DRAWINGS TO BE CHECKED BY CONTRACTOR ON SITE AND ENGINEER INFORMED OF DISCREPANCIES BEFORE WORK COMMENCES.
  2. CONTRACTOR SHALL SATISFY HIMSELF AS TO THE ACCURACY OF EXISTING DRAINAGE LEVELS & THE LOCATION OF EXISTING SEWERS ON SITE PRIOR TO COMMENCEMENT OF WORKS ON SITE.
  3. ALL WORKS TO BE CONSTRUCTED IN ACCORDANCE WITH THE NRA SPECIFICATION FOR ROAD WORKS UNLESS NOTED OTHERWISE.
  4. MANHOLE COVER LEVELS ARE TO CONFORM WITH FINISHED ROAD AND PATH LEVELS.
  5. ALL SURFACE WATER DRAINAGE WORKS TO BE IN ACCORDANCE WITH THE REQUIREMENTS OF THE LOCAL AUTHORITY'S CODE OF PRACTICE FOR DRAINAGE AND THE GOSS'S.
  6. ALL FOUL DRAINAGE WORKS TO BE IN ACCORDANCE WITH IRISH WATERS' CODE OF PRACTICE FOR WASTEWATER SUPPLY AND WASTEWATER INFRASTRUCTURE STANDARD DETAILS.
  7. FOUL SEWERS TO BE CONCRETE PIPES (SPRIGOT AND SOCKET JOINTS AND RUBBER RING FITTINGS COMPLYING WITH IS EN 1916) OR THERMOPLASTIC STRUCTURED WALL PIPES (COMPLYING WITH THE PROVISIONS OF IS EN 13476 AND WS 4-35-01 2000) AND COMPLY WITH THE REQUIREMENTS OF THE IRISH WATER CODE OF PRACTICE.
  8. ALL SURFACE WATER SEWERS TO BE CLASS H CONCRETE TO EN 1916 & IS 62004.
  9. SURFACE WATER COLLECTOR DRAINS 150mm DIA.
  10. FOUL HOUSE CONNECTIONS TO BE 100mm DIA.
  11. THIS DRAWING IS BASED ON TOPO SURVEY BY J&L SURVEY LTD. DATED 06/20/20.
  12. CONTRACTOR SHALL INSPECT THE ROUTE & CONFIRM LOCATIONS OF ALL TREES, FEATURES, ENTRANCES & ASPECTS IMPACTING CONSTRUCTION OF THE WORKS.
  13. NOTE THAT THE CONTRACTOR AND/OR ARCHITECT ARE RESPONSIBLE FOR CONNECTIONS INTO THE BUILDING.
  14. RISING MAIN TO BE POLYETHYLENE PIPE AND FITTINGS FOR WASTEWATER AND SHALL COMPLY WITH REQUIREMENTS OF IS EN 12201.



B	250419	REVISED SHD SUBMISSION	ICD	DJR
A	110419	SHD SUBMISSION	ICD	DJR
REV.	DATE	DESCRIPTION	BY	CHKD.

**PLANNING**

DESIGNED	BP	PREPARED	GMC
DATE	APR 2019	CHECKED	DJR

DBFL Consulting Engineers  
 Dublin Office: Ormrod House, Upper Ormrod Quay, Dublin 7, Ireland. Phone: +353 1 400 4000 Fax: +353 1 400 4050  
 Waterford Office: Unit 2, The Chandery, 1-2 O'Connell Street, Waterford, Ireland. Phone: +353 51 309 500 Fax: +353 51 844 913

PROJECT  
**LANDS AT CAPDOO, CLANE, CO. KILDARE**

DRG. TITLE  
**SITE SERVICES LAYOUT SHEET 3 OF 3**

CLIENT  
**ARDSTONE RESIDENTIAL FUND**

SCALE	1:500 @A1	FILE REF.	162074-3001
DRG. NO.	162074-3003		B

ORDNANCE SURVEY IRELAND LICENCE  
 No EN 0017919  
 © ORDNANCE SURVEY IRELAND  
 GOVERNMENT OF IRELAND